



KL908 Double-Clutch

Women's 5 oz. 100% polyester birdseye mesh polo featuring Tri-Mountain UltraCool® moisture-wicking technology. White contrast piping across front chest and back side panels. Constructed with a three-button placket, rib collar and open cuffs. Square bottom with side vents. Back features large area for decoration.



SIZES:

XS | S | M | L | XL | 2XL | 3XL | 4XL



KL908 Double-Clutch

SIZE CHART

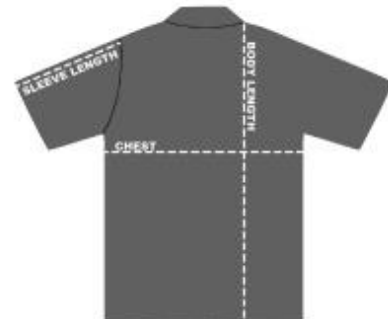
HOW TO MEASURE:

Smooth out wrinkles and lay garment flat on a table before measuring.

CHEST – Measure from 1" below armhole straight across chest.

SLEEVE LENGTH – Measure from top of armhole to sleeve opening.

BODY LENGTH – Measure from high point shoulder to sweep opening.



SIZE (Measurement in inches)	XS	S	M	L	XL	2XL	3XL	4XL
CHEST (1" below armhole)	17.5	18.5	19.5	21.5	23.5	25.5	28	30
SLEEVE LENGTH (from top of armhole)	7.5	8	8.25	8.5	8.75	8.75	9	9
BODY LENGTH (from high point shoulder)	23.5	24.5	25.5	27	28	29.5	31	32